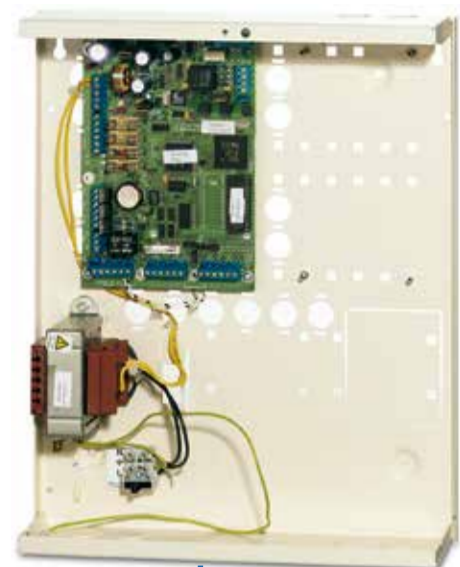


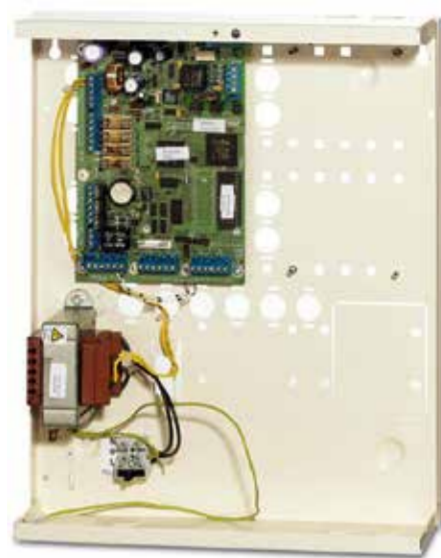
Advisor Master – Intrusion

Integrated | Modular | Flexible | Affordable

EN50131-3:2009 PD6662:2010



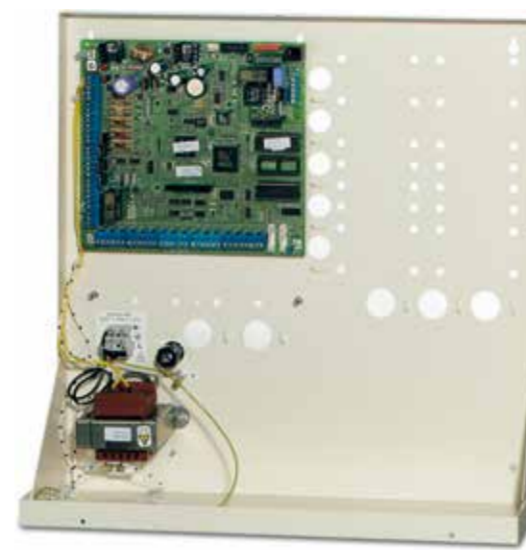
ATS21xxE
ATS34xxE
ATS46xxE



ATS21xxE



ATS34xxE



ATS46xxE

Keypads & Readers **Expanders/DGPs** **Plug-on Expanders & Memory** **Communication** **Cards** **Bus Components**



ATS1110
ATS1111
ATS1115
ATS1116



ATS1190
ATS1190X4



ATS1201E
ATS1203E
ATS1204E



ATS1192
ATS1192X4



ATS1197



ATS1210E
ATS1210LE



ATS1235



ATS1160N



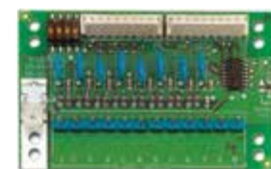
ATS1161N



ATS1211E



ATS1290N



ATS1202



ATS1811



ATS1820



ATS1810



ATS1830



ATS1831



ATS1832



ATS7310



ATS1801



ATS1809



TDA7440



ATS7120



ATS1475



ATS1476



ATS1473



ATS1471



ATS1477



ATS1478



ACT407E



ACT408E



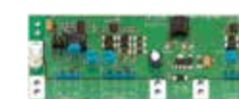
ACT430E



ATS1740



ATS1741



ATS1742



ATS1743



ATS1744



ATS8100



ATS8300

Control Panels		EN 50131 GR III certified
Model	Description	
ATS21xxE	8 - 64 zone integrated security panel	•
ATS34xxE	8 - 128 zone integrated security panel	•
ATS46xxE	16 - 256 zone integrated security panel	•

Note: xx should be replaced with country code

Keypads & Readers		EN 50131 GR III certified
Model	Description	
ATS1110	ATS 16 Area Keypad, 2x16 char. LCD display	•
ATS1111	ATS 16 Area Keypad, 4x16 char. LCD display	•
ATS1115	ATS 16 Area Keypad, 2x16 char. LCD with built-in card reader	•
ATS1116	ATS 16 Area Keypad, 4x16 char. LCD with built-in card reader	•
ATS1160N	ATS Mifare DESFire & EV1 Reader with Output & RTE	•
ATS1161N	ATS Mifare DESFire & EV1 Reader with PIN, output & RTE	•
ATS1190	ATS Smart Card Reader	•
ATS1190X4	ATS Smart Card Reader 4 pcs	•
ATS1192	ATS Heavy-duty Smart Card Reader	•
ATS1192X4	ATS Heavy-duty Smart Card Reader 4 pcs	•
ATS1197	ATS Smart Card Reader with keypad	•

Expanders/DGPs		EN 50131 GR III certified
Model	Description	
ATS1201E	ATS 8 - 32 zone DGP with Power Supply and Siren Driver	•
ATS1202	ATS Plug-in 8-zone expander	•
ATS1203E	ATS 8 - 32 zone DGP with 3 A Power Supply and Siren Driver	•
ATS1204E	ATS 8 - 32 zone DGP with 3 A Power Supply and Siren Driver	•
ATS1210E	ATS 8-zone DGP with Output Connector in plastic housing	•
ATS1210LE	ATS 8 Input expander in large plastic housing	•
ATS1211E	ATS 8-zone DGP with Output Connector in steel housing	•
ATS1235	Wireless DGP on 868MHz Gen 2	•
ATS1290N	ATS Intelligent Addressable DGP	•

Plug-on Expanders & Memory		EN 50131 GR III certified
Model	Description	
ATS1810	ATS 4-way relay card	•
ATS1811	ATS 8-way clocked relay card	•
ATS1820	ATS 16-way clocked open collector card	•
ATS1830	ATS RAM expansion (1MB)	•
ATS1831	ATS Intelligent User Module (4 MB)	•
ATS1832	ATS Intelligent User Module (8 MB)	•

Communication		EN 50131 GR III certified
Model	Description	
ATS1801	ATS Computer and printer interface	•
ATS1809	ATS Universal Interface for an Ethernet based IP connection	•
ATS-IP-KIT	ATS1801 + ATS1809	•
ATS7120	ATS ISDN - B channel communicator	•
ATS7310	GSM Module for Reporting and U/D	•
TDA7440	TDA7440 dual path IP/GPRS alarm dialler for ATS panels	•

Cards	
Model	Description
ACT407E	(25 PACK) Mifare Classic card S50 7-byte UID
ACT408E	(25 PACK) Mifare Classic S50 7-byte UID with Magstripe
ACT430E	Mifare Classic S50 7-byte UID Keyfob
ATS1471	ATS keyfob
ATS1473	ATS keyfob
ATS1475	ATS proximity card, packed by 10 pcs.
ATS1476	ATS proximity card, with Magstripe packed by 10 pc
ATS1477	ATS High quality fibertag, packed by 10 pcs.
ATS1478	ATS Hitag2 tag for use with ATS119x readers and ATS111x keypads. Piano key with ring.

Bus Components		EN 50131 GR III certified
Model	Description	
ATS1740	ATS RS485 isolator/repeater	•
ATS1741	ATS RS485 to RS232 interface	•
ATS1742	ATS RS485 closed loop module	•
ATS1743	ATS RS485 Databus to Multimode Optical Fiber interface	•
ATS1744	ATS RS485 4-Way Databus Isolator	•