

ATS3099

8 - 128 zone integrated security panel / Int.(English)

Intruder Alarm System

The Advisor MASTER is a full-blown intruder alarm system with more than 70 different input types. A maximum of 128 zones (inputs) can be programmed to operate over 8 independent alarm systems (areas). Zones may be assigned to a specific area (offices, stores, etc.) or common to all (reception, canteen, etc.). Each area may have its separate RAS.

Integrated Access Control

All the ATS panels can control 16 doors and allow users to disarm alarm areas as access is granted. All panels also feature the exclusive "3 times badging" to arm. A further 48 "intelligent" doors can be controlled through optional 4-Door Controllers connected on the RS485 data bus.

Complete Family

The Advisor MASTER is a family of 4 control panels that all share the same software, accessories & manuals and only differ by the database & enclosure sizes.

Modular RS485 data bus

The Advisor MASTER communicates with up to 16 RAS's & 15 DGP's using the RS485 data bus. All remote devices on the bus are continuously polled to ensure correct operation and can be connected in star or loop configuration using the optional ATS1740 or ATS1742 interfaces.

Alarm Reporting

The ATS panels are capable of reporting alarms and specified events using a variety of formats (SIA, XSIA, CID, 200 Bd FSK or voice messaging) via either the build-in PSTN dialer or via the optional ISDN-B channel adapter. The ISDN-D is available in the BENELUX for X-25 D-channel reporting via ISDN. In conjunction with the ATS1801 and ATS1806 a TCP/IP reporting connection can be established for the Osborn and Hoffmann receiver. Up to 4 central stations with 2 phone numbers per CS give 8 possible reporting connections.

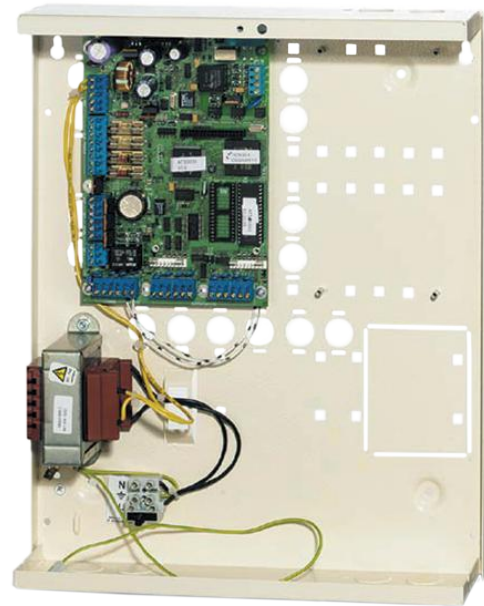
PLC Flexibility

The Advisor MASTER offers a total of flexibility in programming up to 255 outputs through 24 macro logic equations.

Analogue Inputs

All the inputs of the ATS panels are analogue inputs, which enables the measurement of input loops resistance (in Ohms or Voltages) for diagnostic purposes. The inputs can be 2 or 4 state monitored with EOL resistors of 2k2, 4k7 or 10k Ohms. All the control panels are TITAN Diagnostic enhanced and can measure the voltage and current supplied to all the devices on the RS485 data bus.

European Software



Details

- Integrated alarm & access control system for up to 128 zones, 8 areas & 64 doors
- Modular RS485 data bus with continuous polling of up to 16 RAS and 15 DGP
- PLC with 24 macro logic equations
- 255 freely programmable outputs
- Built-in PSTN dialer
- 2 or 4 state monitored analogue inputs
- Programming, monitoring and service by PC either directly on site or from a remote location
- European software
- Switched mode power supply
- Steel enclosures
- EN50131-1 compliant; Environmental Class 2, Security Grade 3
- DD243-2004 compliant

The ATS control panels have the same software across Europe with different country default setting. This allows international customers to streamline their security equipment and promote common security procedures throughout their European operations.

ATS3099

8 - 128 zone integrated security panel / Int.(English)

Technical specifications

System

Product type	Integrated Access Control
Panel type	Hybrid
No. of keypads / readers	16
Data Gathering Panels (DGP)	15
No. of alarm groups	138
Specified cable	WCAT52 / WCAT54

Inputs

Max no. of inputs	128
Onboard inputs	8
ATS1202 support	3

Outputs

No. of outputs	255
No. of onboard outputs	12

Area

No. of areas	8
--------------	---

User/Cards

Max. no. of users	more than 1000
Users with name	50
Max. no. of cards	11466
10-digit PIN codes	2000

Access control

Standard doors on control panel	16
Door groups	128
Floor groups	64
Intelligent doors on 4-door DGPs	48

Communication

Onboard transmission type	PSTN
Transmission extension	GSM/GPRS/IP
Databus type	RS485

Event log

Alarm event log	1000
Access event log	10,000

Electrical

Operating voltage	230 V 50 Hz/23 VAC 56 VA
Power supply type	230 VAC
Power supply value	230 V 50 Hz/23 VAC 56 VA

Physical

Physical dimensions	315 x 388 x 85 mm
Net weight	5.4 kg
Housing	Medium Metal

Environmental

Operating temperature	0 to +50°C
Relative humidity	95% (non-condensing)
Environmental Class	Class II, indoor
IP rating	30

Standards & regulation

EN50131 Grade	Grade 2
Compliance	CE

As a company of innovation, UTC Fire & Security reserves the right to change product specifications without notice. For the latest product specifications, visit UTC Fire & Security online or contact your sales representative.