

# ATS1202

## 8 input expander for ATS120x(E)

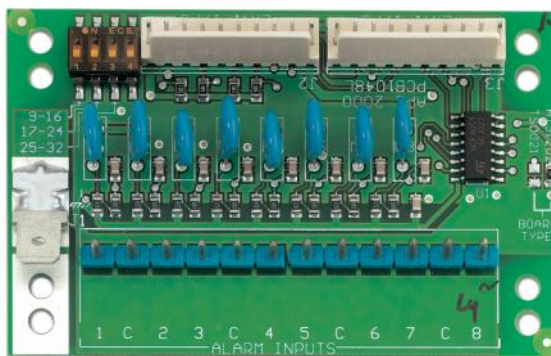
### Product Overview

Input expanders are devices for expanding the input capacity of an advisor MASTER panel or a DGP. Depending on the basic capacity of the panel up to 3 x

ATS1202 input expanders can be used. The unit easily can be daisy chained.

### Expanding Features

A standard 8 zone DGP can have eight zones connected to it. This can be expanded in increments of 8, up to 32, using the ATS1202 8-Zone expanders (A DGP can have 8, 16, 24 or 32 zones). A control panel can have 8 or 16 zones connected to it (depending on control panel type). There are sixteen zones allocated to every DGP address. This can be incremented to a maximum of 32 zones by fitting ATS1202 expander modules. If a DGP has 24 or 32 zones (two or three expanders fitted), the additional system zone numbers are taken from the following DGP address. If this is done, the next DGP address ceases to exist and is not included to be polled e.g. DGP 1 has 24 zones (zones 17 to 40). The next DGP in the system must now be addressed and polled as DGP 3, because zones 33 to 40 on DGP 1 have been taken from DGP 2.



### Details

- The unit easily can be daisy chained
- Depending on the DGP or Panel 2 or 3 expander modules can be fitted
- A maximum of 32 zones can be expanded

# ATS1202

## 8 input expander for ATS120x(E)

### Technical specifications

---

#### General

Expander type	Input expander
Product line	Advisor Advanced, ATS Master
Connection type	Plug-in
Max. distance from panel	Located in Panel or DGP
Max. per panel	2/3
Specified cable	Supplied Flat Cable

#### Inputs

Total	8
Onboard	8
	8

#### System

Addressing	DIP Switches
------------	--------------

#### Electrical

Operating voltage	10.5 to 13.8 V
Current consumption	10 mA
Integrated power supply	No

#### Physical

Physical dimensions	80 x 52 mm
---------------------	------------

#### Environmental

Operating temperature	0 to 50° C
-----------------------	------------

#### Power supply

	10.5 - 13.8 VDC
	Powered by the panel or DGP

#### Current consumption

	10 mA
--	-------

#### Siren output

	No
--	----

#### OC outputs on board

	None
--	------

#### Max. distance from panel

	Located in Panel or DGP
--	-------------------------

#### Max. number per panel

	2/3 and 3 per ATS1201
--	-----------------------

#### Specified cable

	Supplied Flat Cable
--	---------------------

#### Addressing

	Individually, by DIP switches
--	-------------------------------

#### PCB dimensions

	80 x 52 mm
--	------------

#### Housing dimensions (W x H x D)

	No enclosure
--	--------------

#### Mains transformer

	Not applicable
--	----------------

#### Operating temperature

	0° to +50°C
--	-------------

As a company of innovation, UTC Fire & Security reserves the right to change product specifications without notice. For the latest product specifications, visit UTC Fire & Security online or contact your sales representative.

29 April 2019 - 13:51